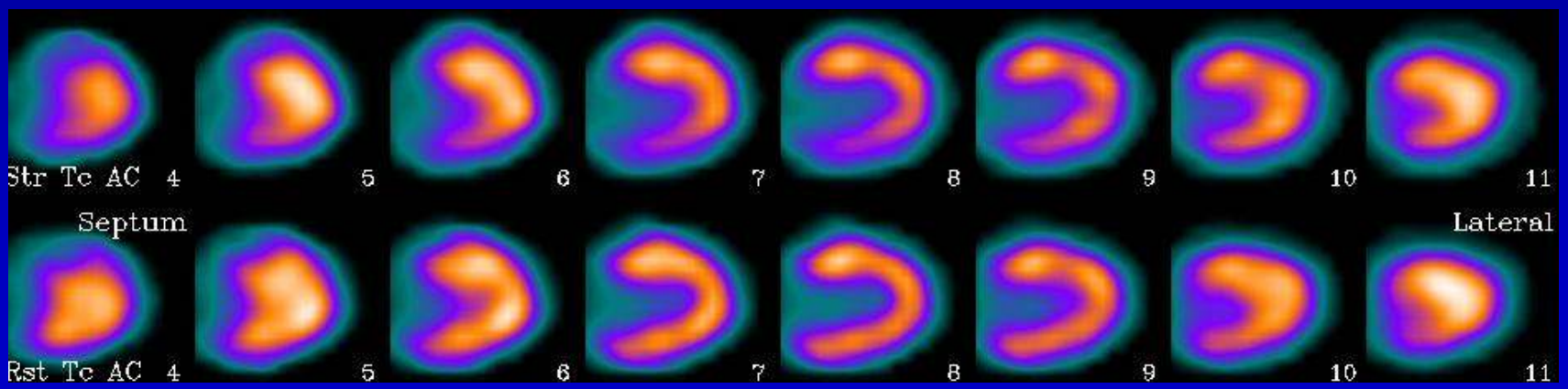
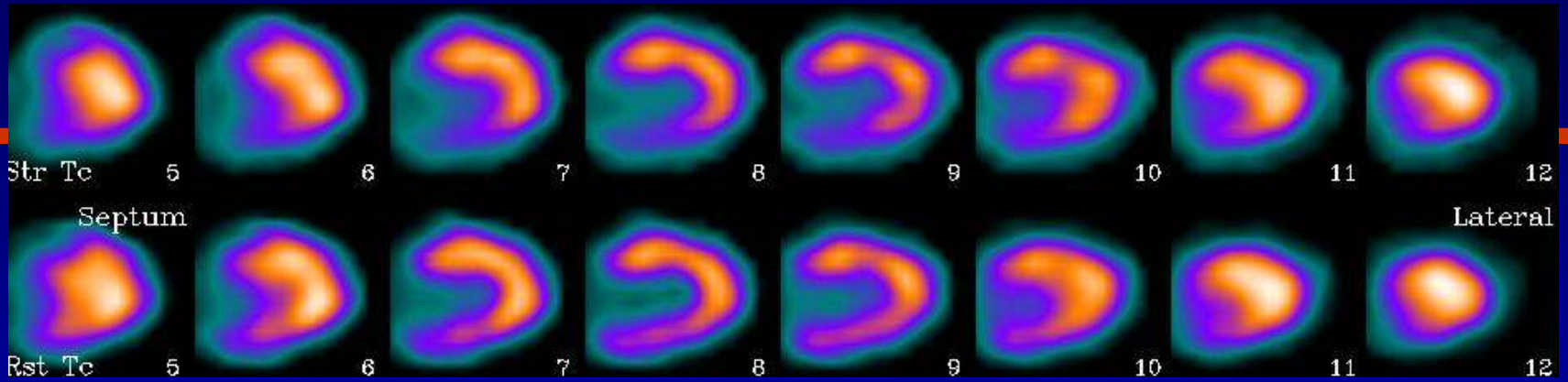


SPECT-CT Applications

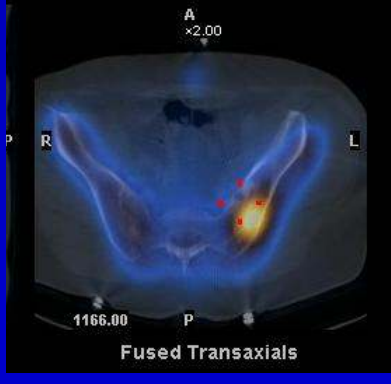
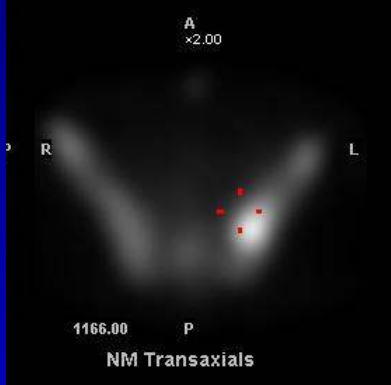
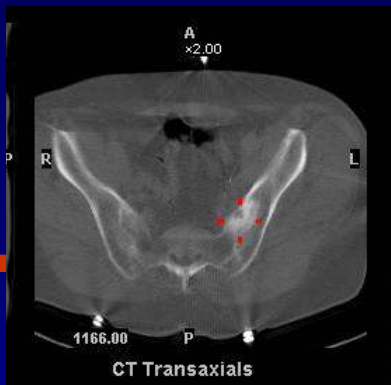
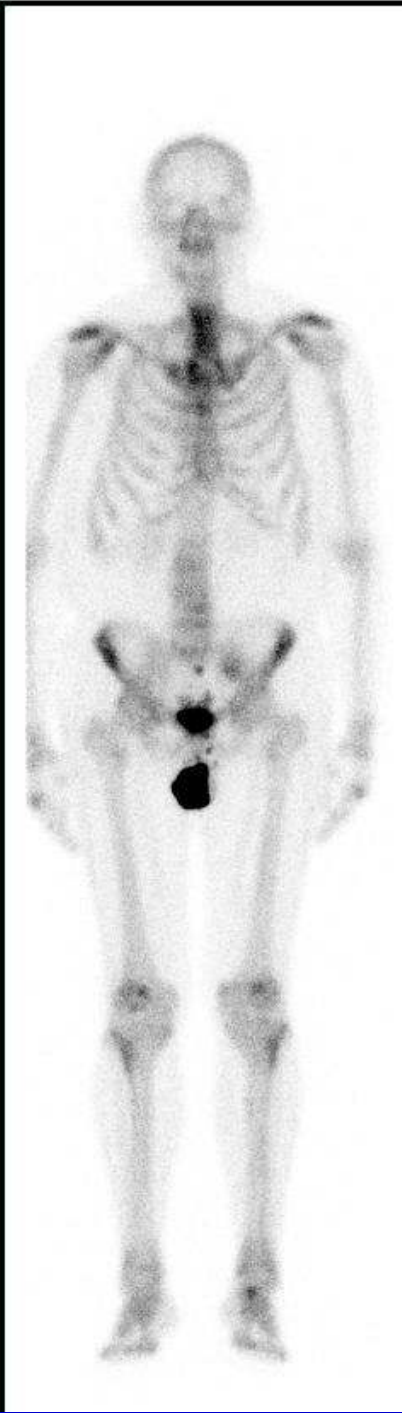
Peeyush Bhargava MD

Chief of Nuclear Medicine, MEDVAMC

Associate Professor of Radiology, BCM



Reversible Inferior wall defect, before and after CTAC



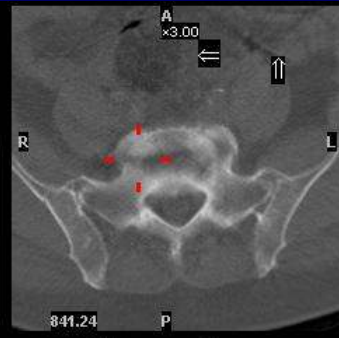
Sclerotic bone metastasis
in left ilium



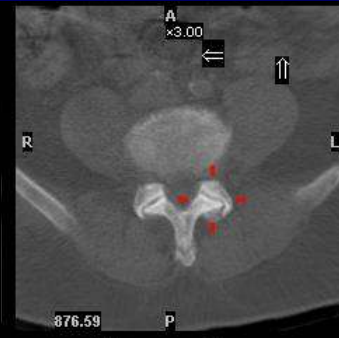
DJD in the spine



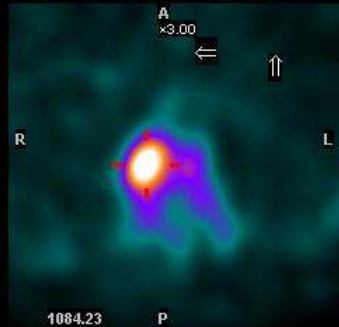
CT Transaxials



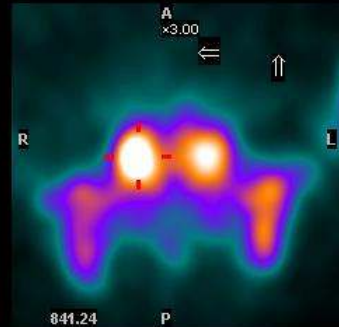
CT Transaxials



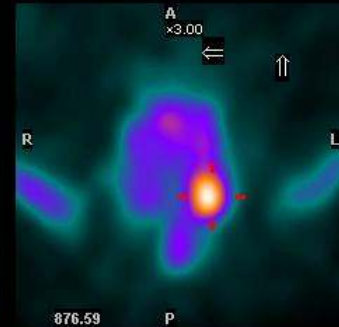
CT Transaxials



NM Transaxials



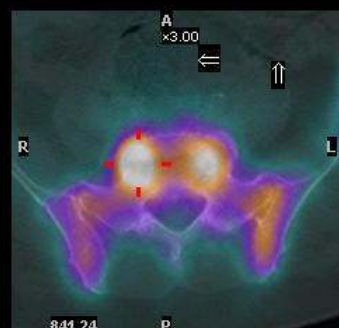
NM Transaxials



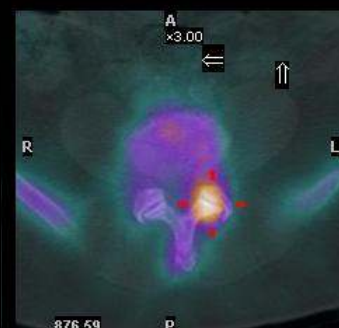
NM Transaxials



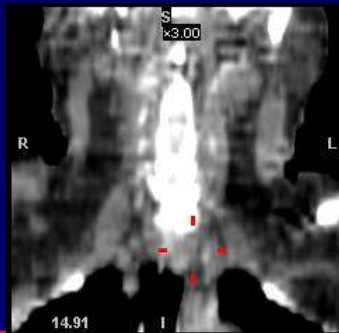
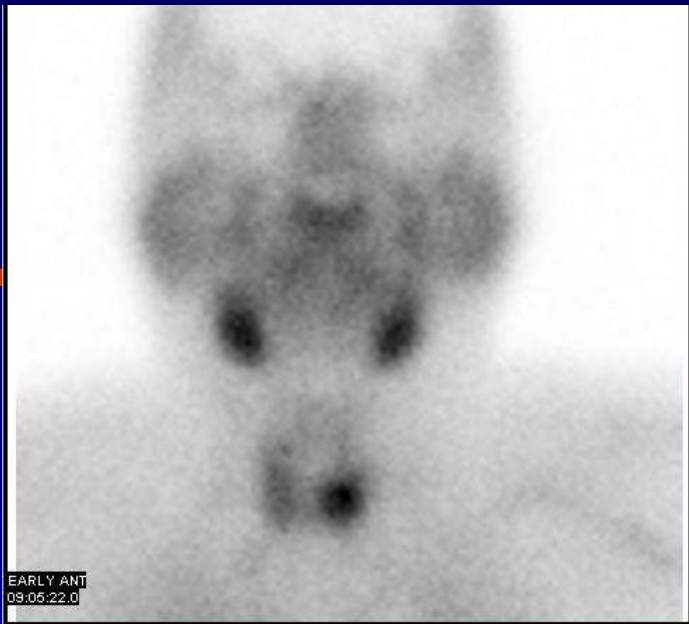
Fused Transaxials



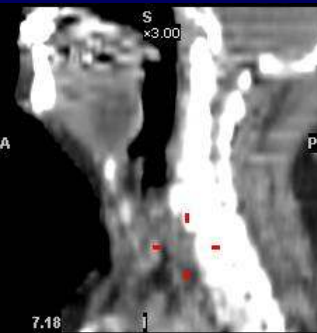
Fused Transaxials



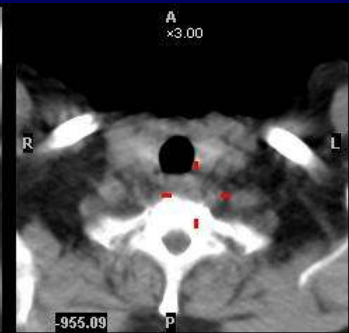
Fused Transaxials



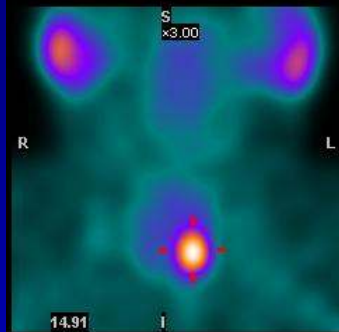
CT Coronals



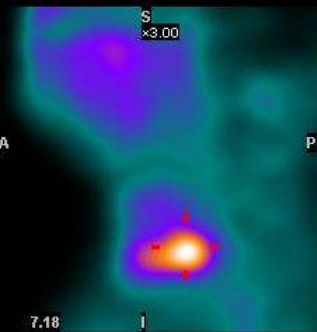
CT Sagittals



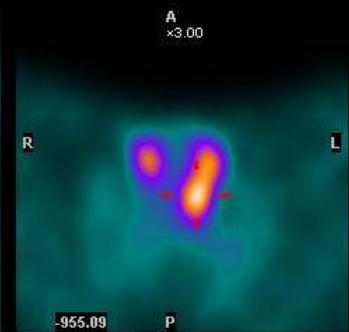
CT Transaxials



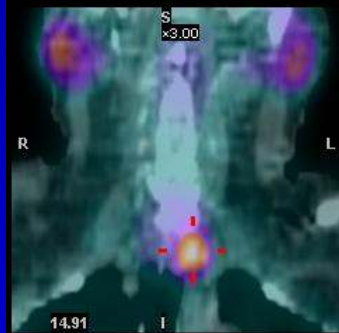
NM Coronals



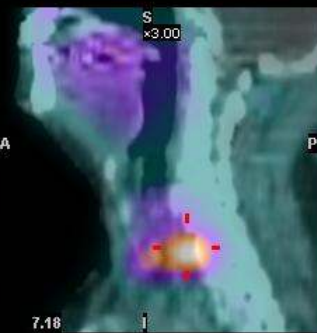
NM Sagittals



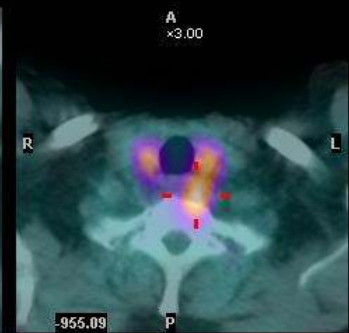
NM Transaxials



Fused Coronals



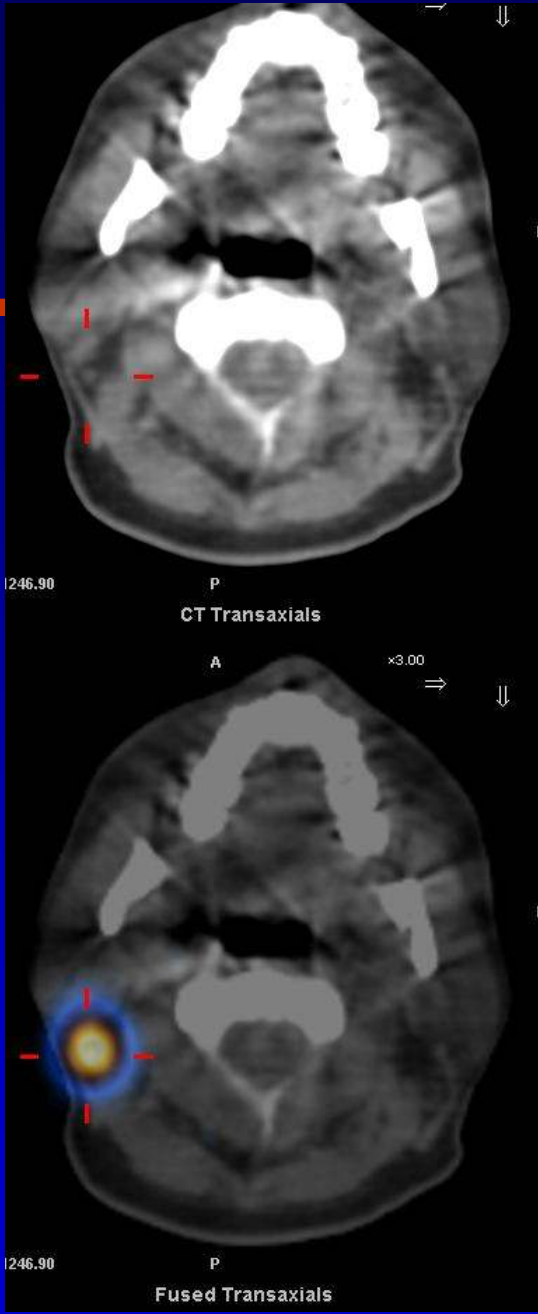
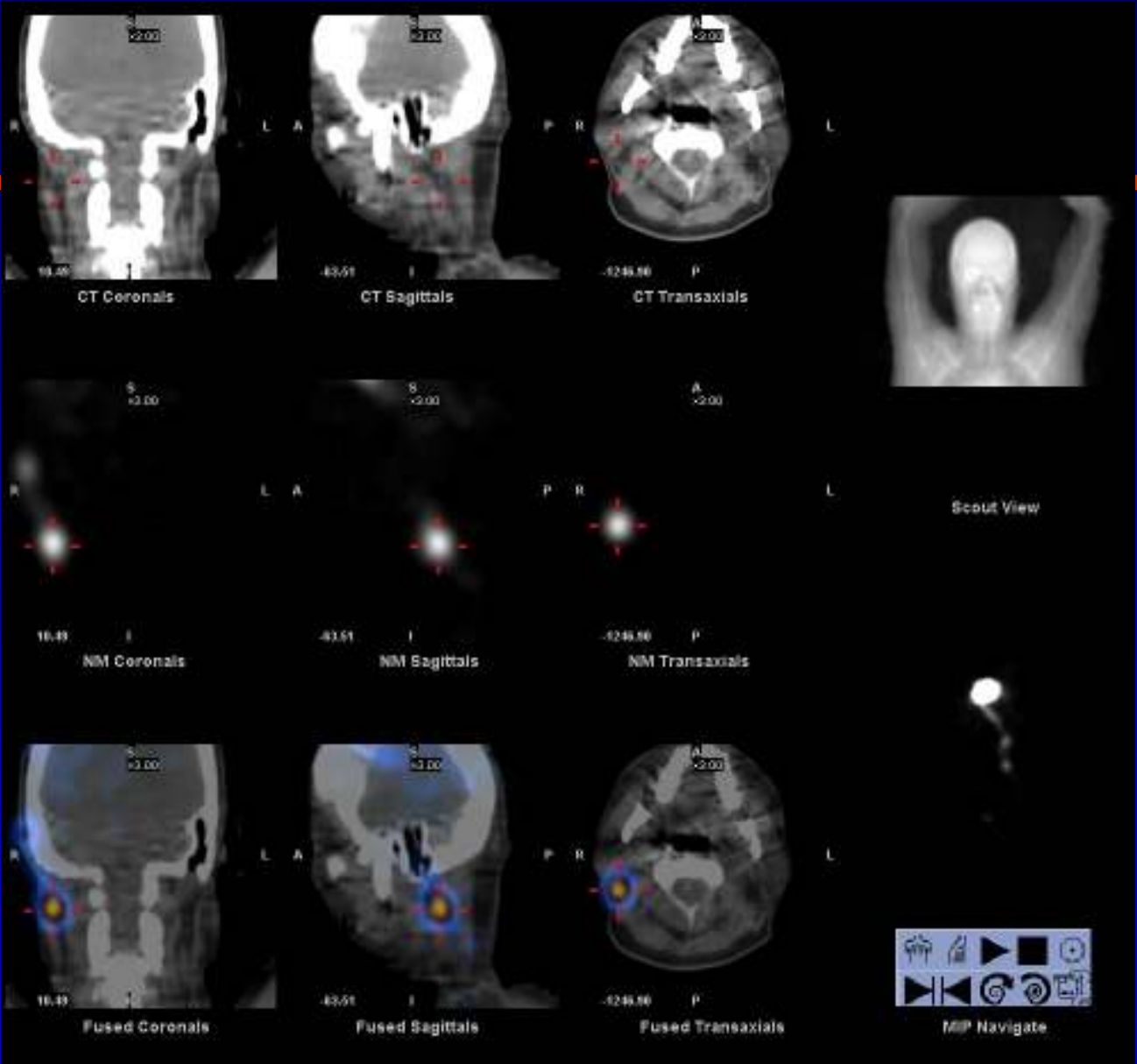
Fused Sagittals

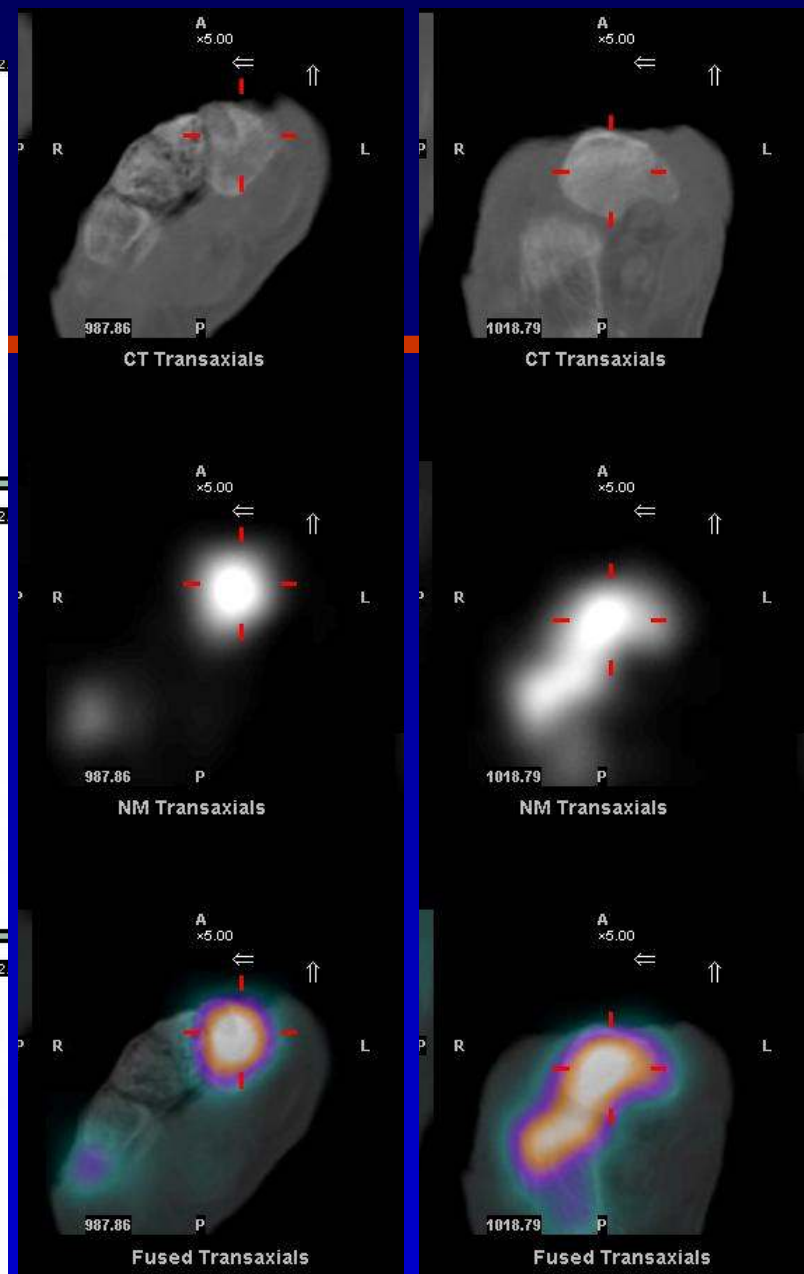
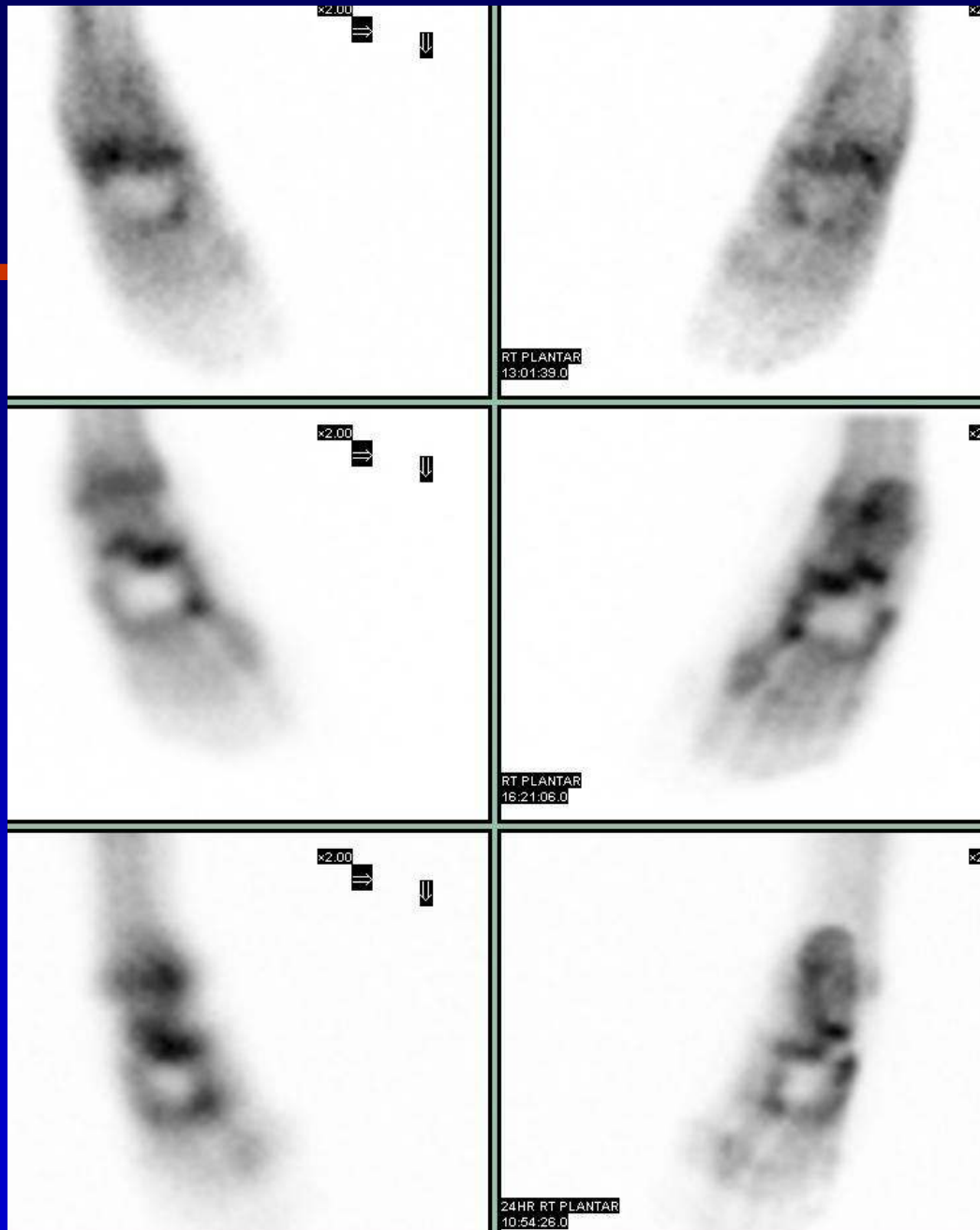


Fused Transaxials

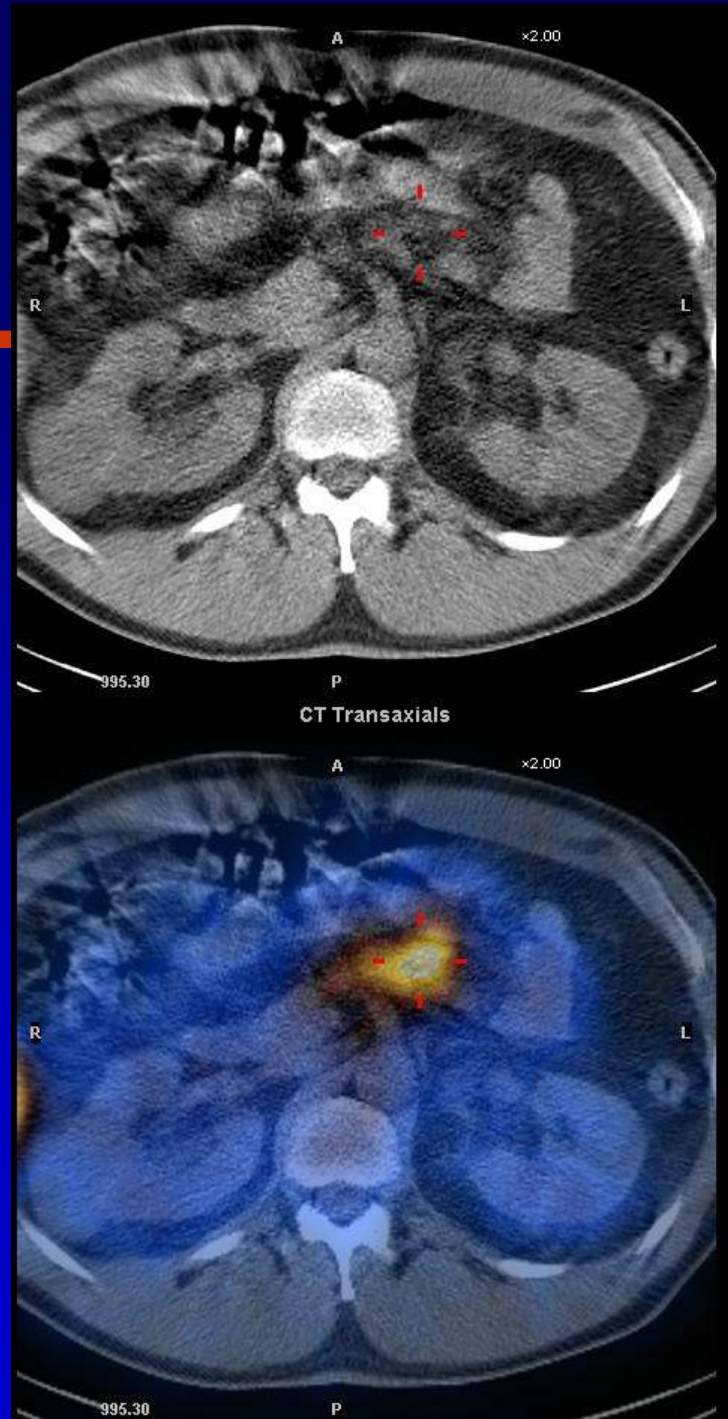
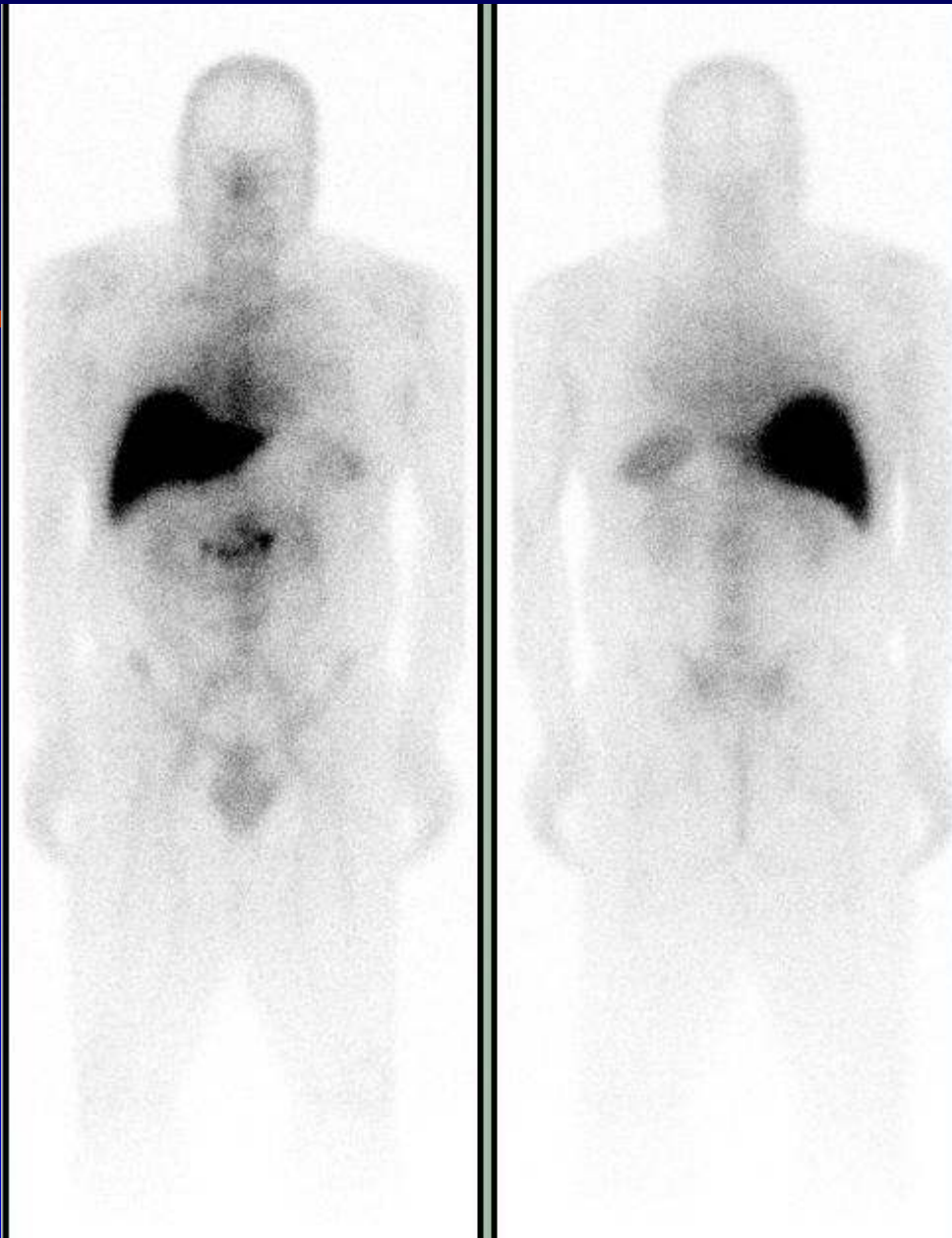
Localization of parathyroid adenoma

Localization of sentinel node from scalp melanoma



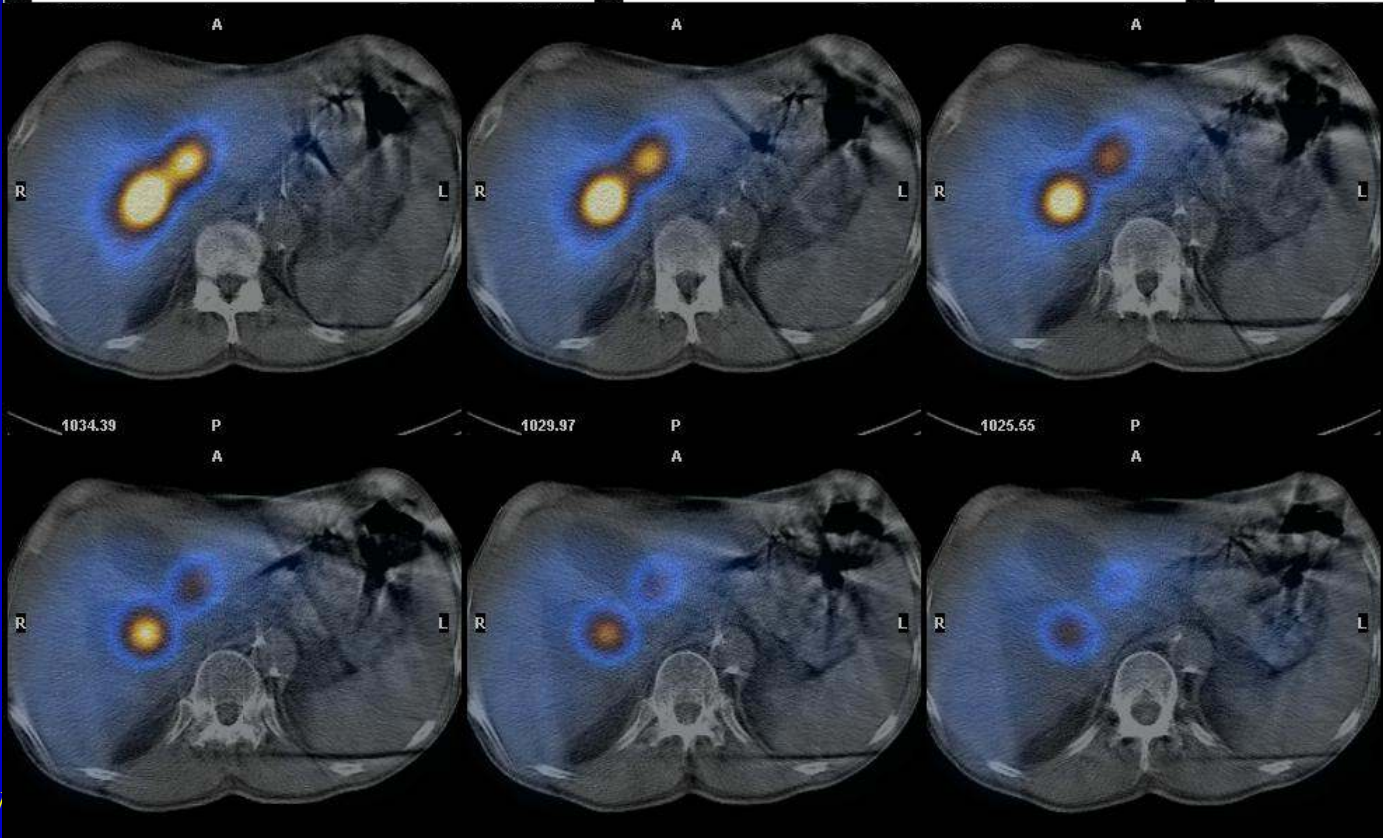


Tarsal necrotizing osteomyelitis

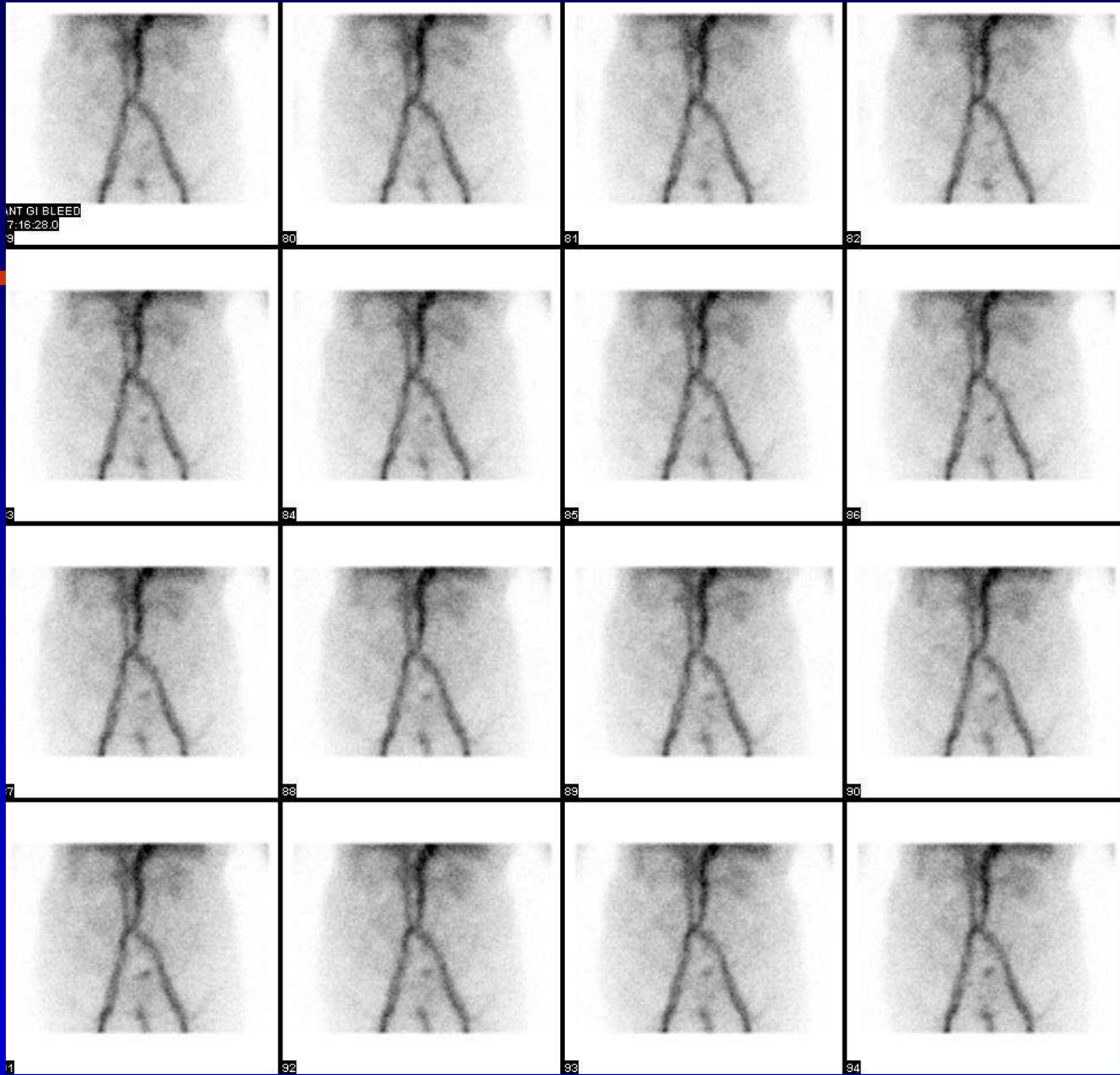


Metastatic mesenteric adenopathy on Prostascint

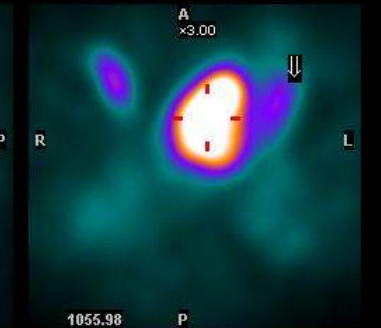
www.nuclearmd.com



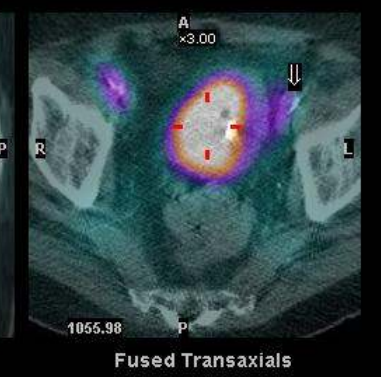
Negative HIDA
for bile leak into
a post transplant
collection



CT Transaxials

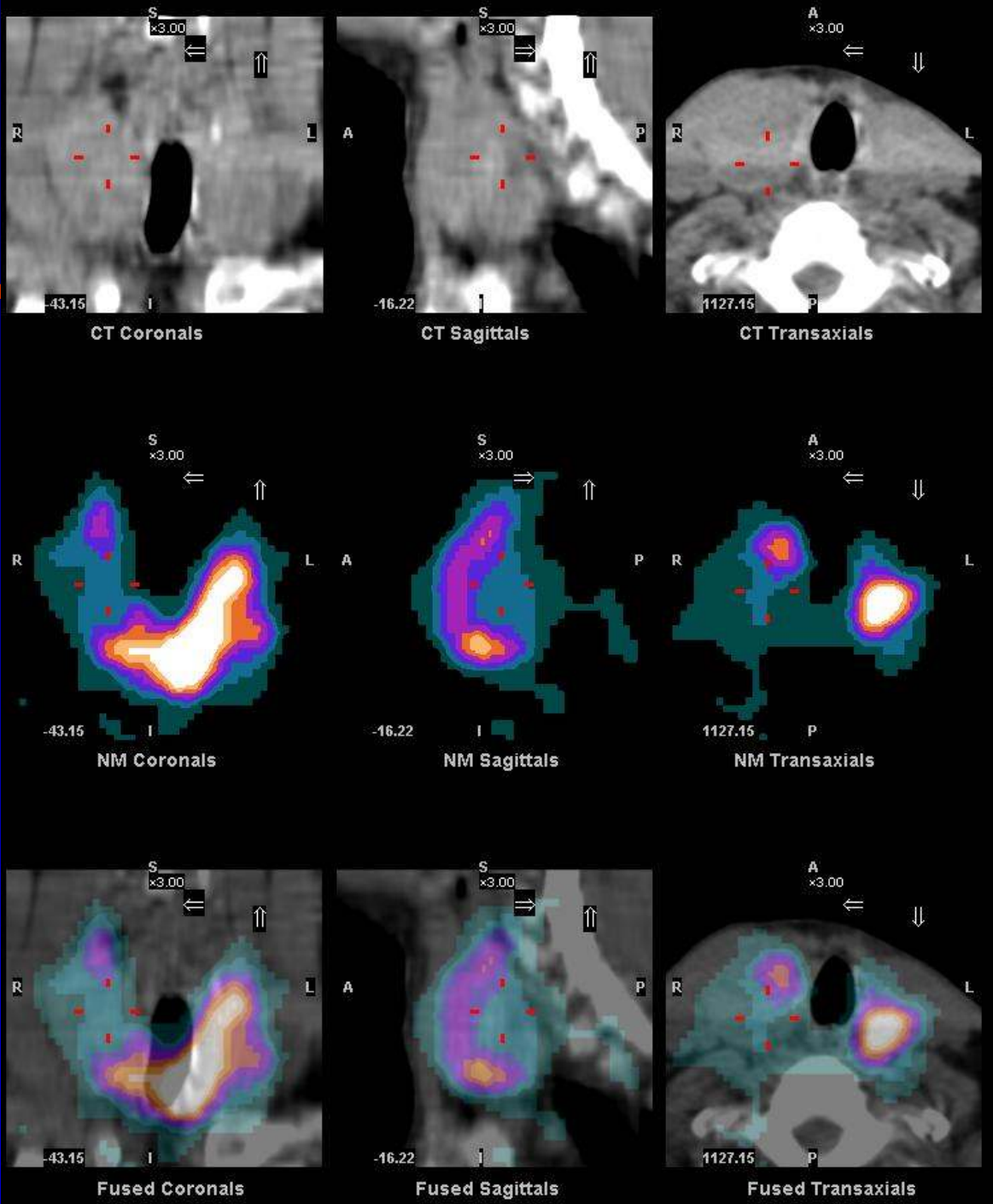


NM Transaxials



Fused Transaxials

Anatomical localization for biopsy assistance of dominant cold nodule in thyroid



Conclusions and Issues

Better anatomical localization

Morphological characterization

- * More confident reporting
- * Less indeterminate findings
- * Biopsy assistance
- * Less need for follow up
- * CT quality
- * Reimbursement
- * Radiation exposure
- * Study time